



Ergonomic telephones

Special variants „S 510 IP/S 510 IP radio“ with contact input

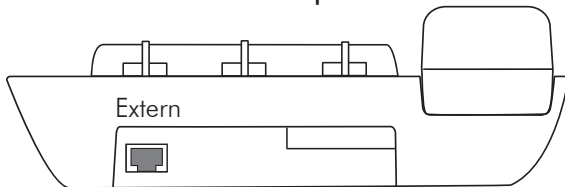
Description

The contact input is a voltage input separated via an optocoupler. If an emergency call is triggered via a connected cord pull switch, the contact closes a current loop to the optocoupler. The outside contact must be neutral. Any number of switches can be connected in parallel. If an emergency call is triggered the emergency numbers assigned to the contact input are dialed.

Voltage range: 10 .. 60 V.

Power consumption: about 3 mA constant.

Connection socket at the phone:

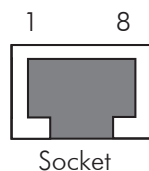


„Extern“ socket for the connection of cord pull switches.

Wire assignment:

Assignment of the 8-pin RJ45 socket at the phone and of the telephone connecting cable with two 8-pin RJ45 western plugs:

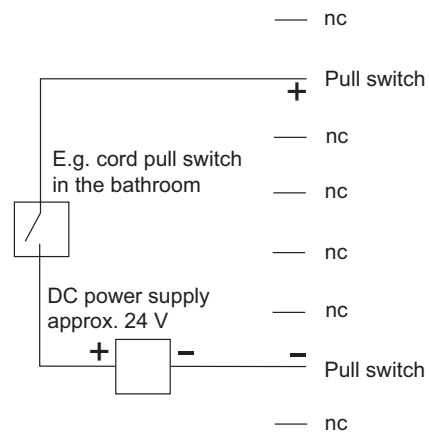
- | | |
|---|--------------------|
| 1 | not connected |
| 2 | + Cord pull switch |
| 3 | not connected |
| 4 | not connected |
| 5 | not connected |
| 6 | not connected |
| 7 | - Cord pull switch |
| 8 | not connected |



Socket

The connection meets the connection class TNV3. The safety regulations for the telephone connection line are valid. Unused wires may not be wired otherwise!

Connection of cord pull switches with additional power supply:



Connection length up to max. 50 meters within the apartment.

Monitored input as an alternative

Alternatively to the described contact input, we offer a monitored contact input. The phone monitors the functionality of the cord pull switch and reacts in case of a defect or deduction with a fault message. If you connect a cord pull switch with LED, the reassurance light can be switched under certain conditions.

The monitored contact input is not defined by default as a special variant. It requires a customer specific definition. Further information on request.

The phones include open source software Linux/GNU. You can request further support via „info@ergophone.de“.

Subject to modifications.

Product color similarly to the illustration.

Doc.-version 03.

Ergophone Tiptel GmbH

Halskestr. 1 - 40880 Ratingen - Germany - Phone +49 (0)2102-428-0 - www.ergophone-tiptel.com

Location Cölbe: Zimmermannstr. 12 - 35091 Cölbe - Germany - Phone +49 (0)6421-402-0 - www.ergophone.de